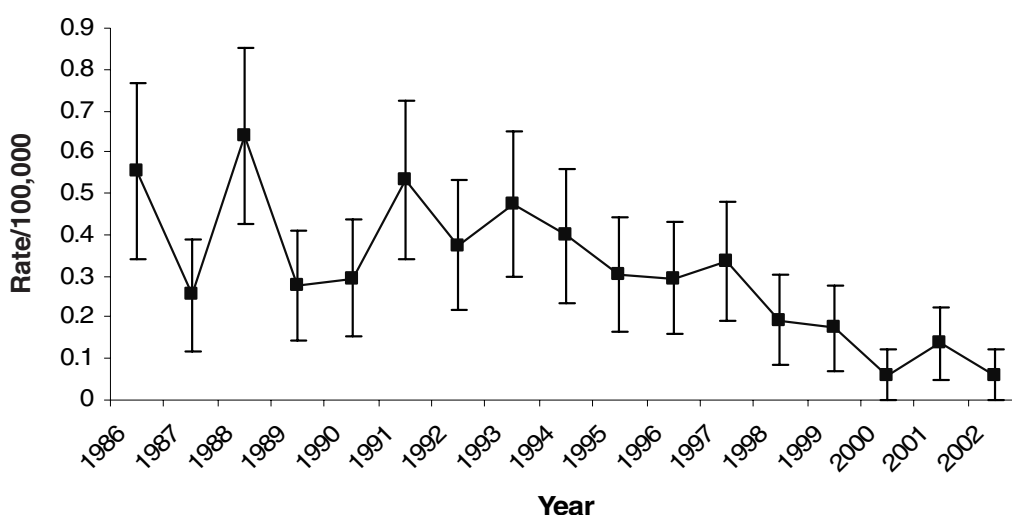


TRENDS IN DEATHS

ASSOCIATED WITH MACHINERY IN NEW SOUTH WALES

- Machinery was the fourteenth leading cause of injury death in NSW from 1998 to 2002.
- Between 1998 and 2002, 40 people died as a result of machinery in NSW.
- There was a statistically significant decline in machinery death rates in NSW from 1986 to 2002.

**Yearly trend in death rates for machinery:
NSW, 1986-2002**



- People aged 50-54 years had the highest rates of death due to machinery in NSW from 1998 to 2002.
- Males accounted for all machinery deaths in NSW from 1998 to 2002.
- From 1998 to 2002, *agricultural machinery* (20%) was the most common cause of machinery death in NSW.



Produced by the NSW Injury Risk Management Research Centre,
The University of New South Wales – June 2005

Source: Schmettmann ML, CF Finch and AM Williamson (2004).
NSW Injury Profile: A review of injury deaths during 1998–2002.
Sydney, NSW Injury Risk Management Research Centre.

<http://www.irmrc.unsw.edu.au/Publications/centrereports.asp>

THE UNIVERSITY OF
NEW SOUTH WALES

