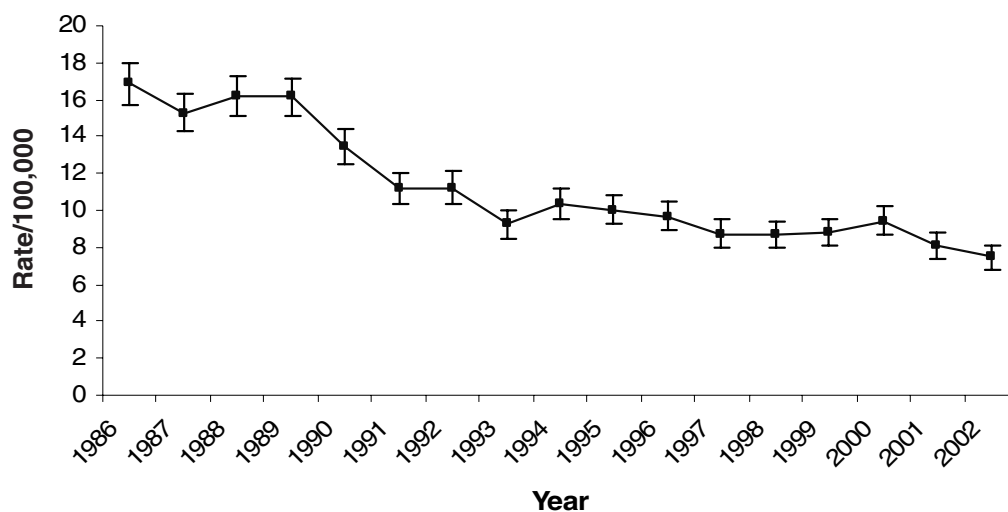


TRENDS IN MOTOR VEHICLE TRANSPORT RELATED DEATHS IN NEW SOUTH WALES

- Motor vehicle transport was the second leading cause of injury death in NSW from 1998 to 2002.
- Between 1998 and 2002, 2765 people died as a result of motor vehicle transport incidents in NSW.
- There was a statistically significant decline in motor vehicle transport death rates in NSW from 1986 to 2002.

Yearly trend in death rates for motor vehicle transport: NSW, 1986-2002



- People aged 15-24 years and 80+ years had the highest rates of death due to motor vehicle transport incidents in NSW from 1998 to 2002.
- Males accounted for 72% of all motor vehicle transport deaths in NSW from 1998 to 2002.
- From 1998 to 2002, *motor vehicle occupant in traffic (62%) and pedestrian in traffic (17%)* were the most common categories of road user killed in motor vehicle transport incidents in NSW.



Produced by the NSW Injury Risk Management Research Centre,
The University of New South Wales – June 2005

Source: Schmertmann ML, CF Finch and AM Williamson (2004).
NSW Injury Profile: A review of injury deaths during 1998–2002.
Sydney, NSW Injury Risk Management Research Centre.

<http://www.irmrc.unsw.edu.au/Publications/centrereports.asp>

THE UNIVERSITY OF
NEW SOUTH WALES

