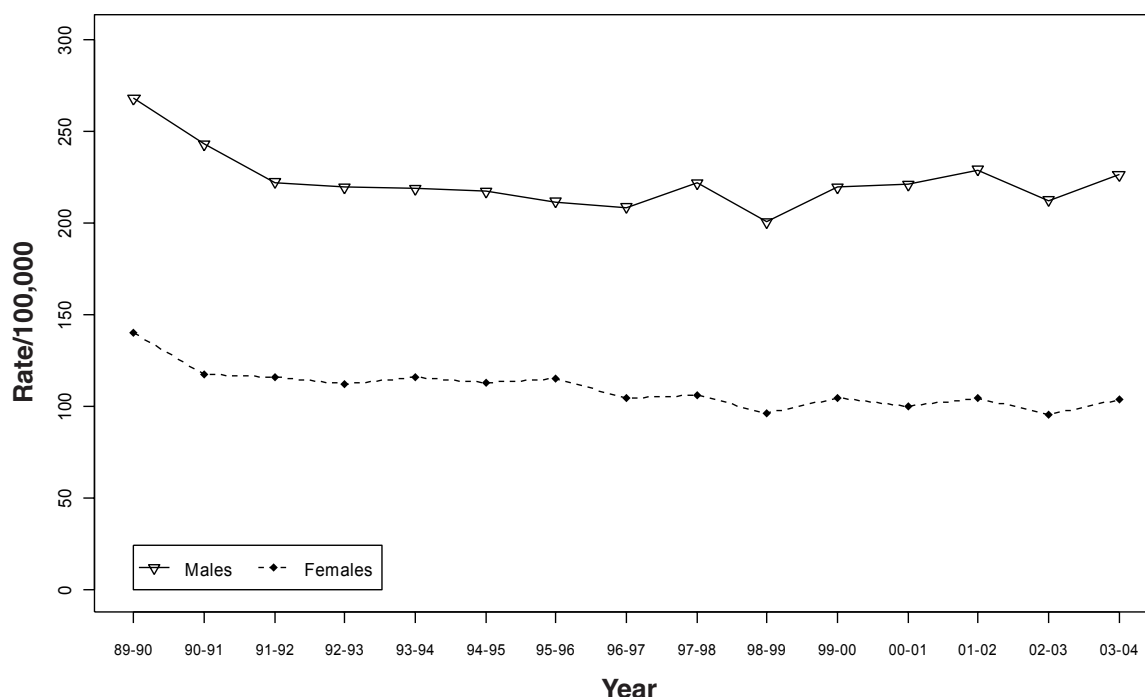


# Trends in motor vehicle transport hospitalisations in New South Wales (NSW)

- ▶ Motor vehicle transport was the second leading cause of injury hospitalisation in NSW from 1999–2000 to 2003–2004.
- ▶ Between 1999–2000 and 2003–2004, there were 53,211 hospitalisations as a result of motor vehicle transport-related injury in NSW.
- ▶ There was a statistically significant decreasing trend in motor vehicle transport injury hospitalisation rates in NSW from 1989–1990 to 2003–2004 for both males and females.
- ▶ People aged 15–24 years had the highest rates of injury hospitalisation due to motor vehicle transport in NSW from 1999–2000 to 2003–2004.

## Hospitalisation rate for injury due to motor vehicle transport by sex, NSW, 1989–1990 to 2003–2004



- ▶ Males accounted for 68% of all motor vehicle transport injury hospitalisations in NSW from 1999–2000 to 2003–2004.
- ▶ From 1999–2000 to 2003–2004, *occupants of motor vehicles involved in traffic incidents (48%)* were the most common category of road user hospitalised due to motor vehicle transport incidents in NSW.