

12 Struck by/struck against

Struck by/struck against is an unintentional cause of injury death (WHO 1977, WHO 1996). WHO classifies the cause of struck by/struck against deaths by the event causing contact to be made between one person and another person(s) or object(s) as the result of an unintentional event (e.g. sporting activity). The events which cause contact to occur include *struck by/against a person or object* and *caught between two objects*. Struck by/struck against deaths can also be intentional. A struck by/struck against injury inflicted on one person by another that results in death is classified as an interpersonal violence death (WHO 1977, WHO 1996). Deaths due to intentional struck by/struck against events are covered in the interpersonal violence chapter.

Struck by/struck against death data from 1986 to 2002 were used to describe the demographic profile of struck by/struck against deaths in NSW. Death data during 1998–2002 were used for the majority of the analyses, but trend analyses used death data from 1986 to 2002.

Struck by/struck against was the tenth leading cause of injury death from 1998–2002 and accounted for approximately 1% of all injury deaths (see Table 2). During these years, 111 people died from struck by/struck against causes at an overall rate of 0.3/100,000 population and 89% were male. Approximately 23 people died each year from 1986 to 2002 as the result of being struck by/struck against.

Figure 22 shows the yearly trend in death rates for struck by/struck against from 1986 to 2002. The struck by/struck against death rate showed no statistically significant trend between 1986 and 2002.

Figure 22. Yearly trend in death rates for struck by/struck against: NSW, 1986–2002

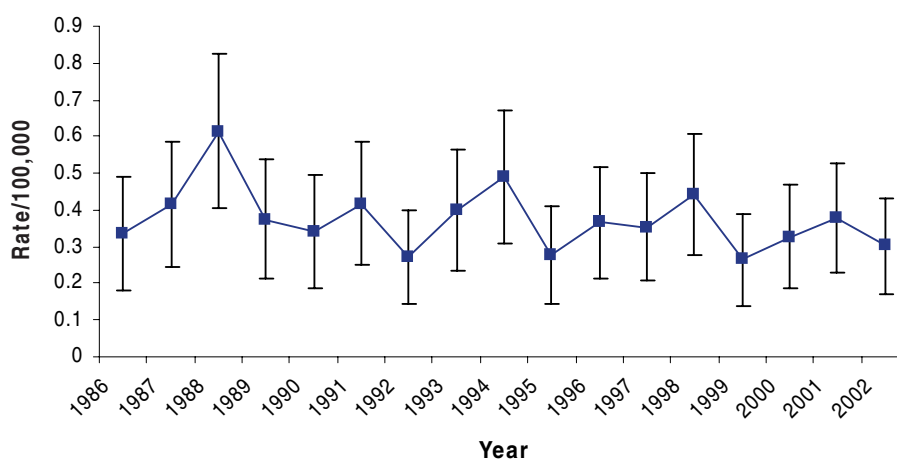


Figure 23 shows the age-specific death rates for struck by/struck against events between 1998 and 2002. People aged 85+ years had the highest rates of death due to struck by/struck against, but accounted for only 2% of all such deaths. Other high death rates for struck by/struck against were seen in children under age five years and people aged 45–54 years. Struck by/struck against deaths in children under age five and people aged 45–54 years of age accounted for 10% and 23% respectively of all struck by/struck against deaths between 1998 and 2002.

Figure 23. Age-specific death rates for struck by/struck against: NSW, 1998–2002

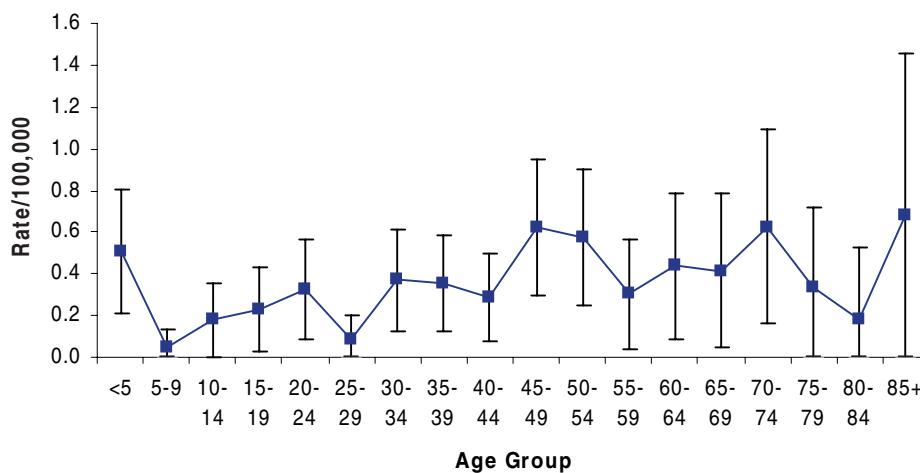


Table 21 shows the number of struck by/struck against deaths and death rates by cause for all persons, males and females, during 1998–2002. *Struck by/against a person or object* and *caught between two objects* were the causes of all struck by/struck against deaths and accounted for 60% and 20% of all struck by/struck against deaths respectively. Males accounted for 86% of all struck by/struck against deaths due to *struck by/against a person or object* and all struck by/struck against deaths due to being *caught between two objects*.

Struck by/against a person or object caused the majority of male struck by/struck against deaths and accounted for 76% of all male struck by/struck against deaths. The rates for male struck by/struck against deaths exceeded the corresponding rate for females for *struck by/against a person or object* deaths in Table 21. The male struck by/struck against death rate was also significantly higher than female rates for *struck by/against a person or object* deaths. The male death rate was more than six times the corresponding female death rate struck by/against a person or object.

Struck by/against a person or object caused all of the female struck by/struck against deaths during 1998–2002. No females died as a result being *caught between two objects*.

Table 22 shows struck by/struck against deaths by age group and cause in NSW for 1998–2002. *Struck by/against a person or object* was the leading cause of struck by/struck against deaths in all age groups.

Table 21. Number of struck by/struck against deaths and death rates/100,000* by cause: NSW, 1998–2002

Causes	All persons		Males		Females		Ratio [‡]
	N	Rate [†]	N	Rate [†] (CI) ^{††}	N	Rate [†] (CI)	
Struck by/against person or object	88	0.27	76	0.47 (0.37–0.58)	12	0.07 (0.03–0.11)	6.65
Caught between 2 objects	23	0.07	23	0.15 (0.09–0.21)	0		–
All struck by/against	111	0.34	99	0.62 (0.50–0.74)	12	0.07 (0.03–0.11)	8.69

* Death rates have been age-adjusted using the 2001 Australian census population. † Rate/100,000. ‡ Mortality ratio for male/female. †† 95% confidence interval.

SUMMARY

Struck by/struck against was a leading cause of injury death for people in NSW, accounting for approximately 23 deaths each year from 1986 to 2002. Analysis of the trend for struck by/struck against death rates showed no statistically significant change was present between 1986 and 2002. No comparison can be made with previous results as data for struck by/ struck against was not examined from 1995 to 1999 by Schmertmann and Williamson (2002).

People aged 85+ years had the highest rates of death due to struck by/struck against, but accounted for only 2% of all struck by/ struck against deaths. Other high death rates for struck by/struck against were seen in children under age five years and people aged 45–54 years.

Struck by/against a person or object and *caught between two objects* were the causes of all struck by/struck against deaths. *Struck by/against a person or object* was the leading cause of struck by/struck against deaths in all age groups.

Males accounted for 89% of all struck by/struck against deaths in NSW during 1998–2002. Males accounted for 86% of all struck by/struck against deaths due to *struck by/against a person or object* and all struck by/struck against deaths due to being *caught between two objects*. The male struck by/struck against death rate was also significantly higher than female rates for *struck by/against a person or object* deaths.

These results indicate that struck by/struck against deaths are a public health problem for people in NSW, especially for males. Being struck by or struck against another person or object accounted for 60% of all struck by/struck against deaths. The specific factors that caused the people or objects to strike or to be struck by other people or objects and the types of injuries that resulted should be investigated. If patterns are found in terms of the types of environments or situations in which fatal injury due to *struck by/against a person or object* are likely, this would provide useful information about potentially dangerous situations.

Table 22. Struck by/struck against deaths* by age group and cause†: NSW, 1998–2002

Rank	Age group										Total
	<1	1–4	5–9	10–14	15–24	25–34	35–44	45–54	55–64	65+	
1	Struck by/ against person or object #	Struck by/ against person or object 7	Struck by/ against person or object #	Struck by/ against person or object #	Struck by/ against person or object 9	Struck by/ against person or object 9	Struck by/ against person or object 13	Struck by/ against person or object 19	Struck by/ against person or object 9	Struck by/ against person or object 16	Struck by/ against person or object 88
2		Caught between 2 objects #		Caught between 2 objects #	Caught between 2 objects #	Caught between 2 objects #	Caught between 2 objects #	Caught between 2 objects 7	Caught between 2 objects #	Caught between 2 objects #	Caught between 2 objects 23

* Numbers represent the number of cases. † See Appendix 4 for struck by/struck against cause codes. # Cell size less than five cases